

Modelo **CC** para montagem cabo-cabo / **CC** type for cable-cable mounting
 Modelo **DP** para montagem cabo-PCI / **DP** type for WTBS mounting
 Para montagem cabo-PCI use DP com CCF-04 / For cable-PCB mounting use DP and CCF-04

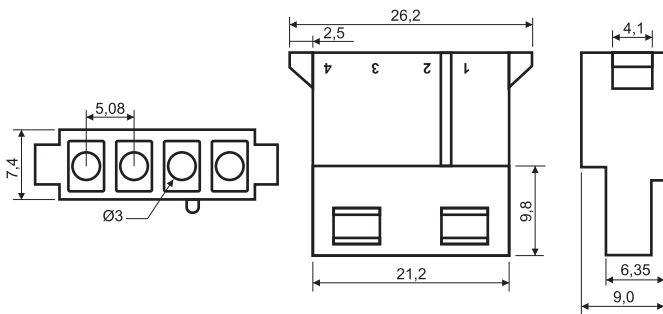


Especificações / Specifications

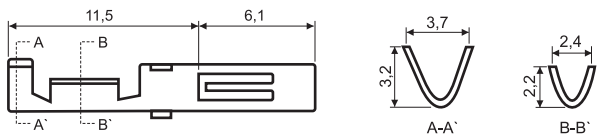
Capacidade do contato / Rated current	7A
Tensão de operação máx. / Maximum operating voltage	250 VCA ou VCC / VAC or VDC
Resistência de contato inicial máx. / Max. initial contact resistance	20 mΩ
Resistência de isolamento / Insulation resistance	1000MΩ min. (500VCC / VDC)
Rigidez dielétrica / Withstanding voltage	1500 VCA / VAC (1minuto / minute)
Temperatura de operação / Operating temperature range	-25 ~ 125°C
Material do isolador / Insulator material	PA 66 UL94V-2
Material do contato / Contact material	Bronze fosforoso / Phosphor bronze
Acabamento / Finish	Estanhado / Tin plated
Cabo aplicável / Applicable wire	18-22 AWG

Dimensões / Dimensions

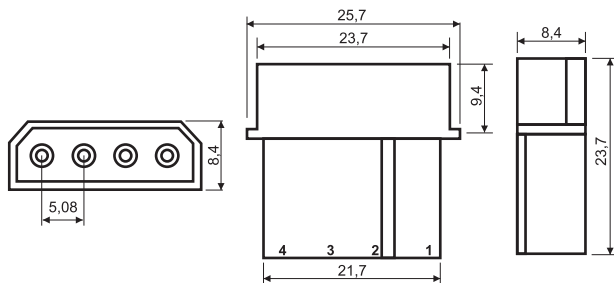
CCF-04



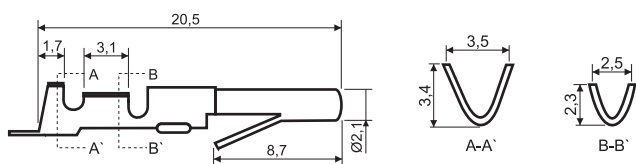
CCTF



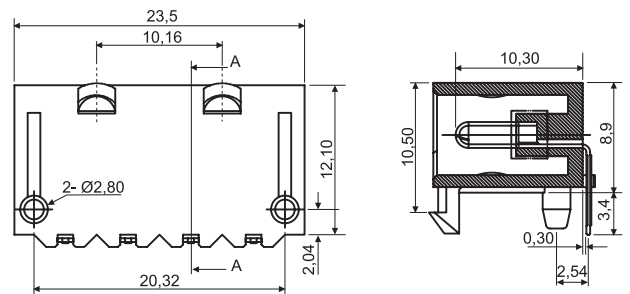
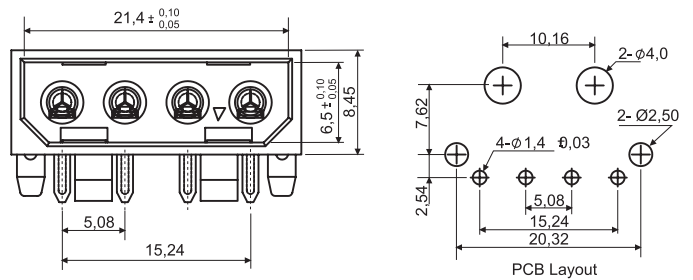
CCM-04



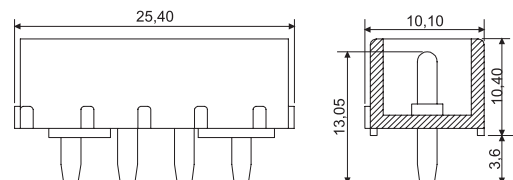
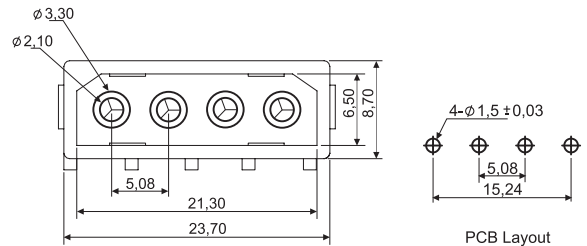
CCTM



DPMN-04



DPMC-04



Todas as dimensões em milímetros / All dimensions in millimeters