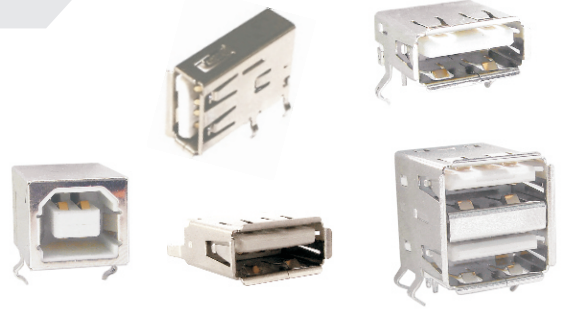


USB

Chave de código / How to order

USB-BN

- BN - USB B fêmea simples 90° / USB female type B 90°
- ACS - USB A fêmea simples 180° / USB female type A 180°
- ANS - USB A fêmea simples 90° / USB female type A 90°
- AND - USB A fêmea duplo 90° / USB double female type A 90°
- AVL - USB A fêmea simples estilo Upright / USB female type A Upright style

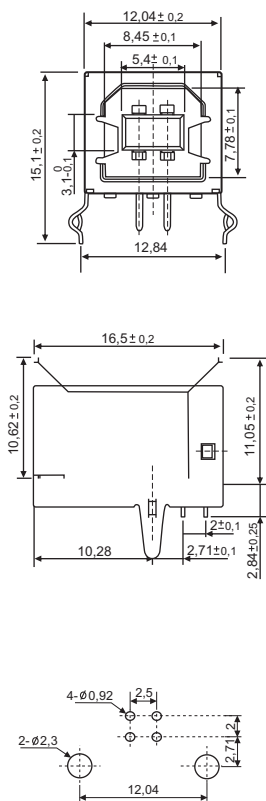


Especificações / Specifications

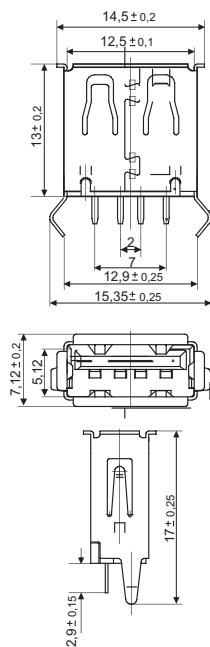
| | |
|--|-----------------------------------|
| Capacidade do contato / Rated current | 1A |
| Tensão de operação máx. / Maximum operating voltage | 30VCA ou VCC / VAC or VCC |
| Resistência de contato máx. / Max. contact resistance | 30 mΩ |
| Resistência de isolamento / Insulation resistance | 1000MΩ min. (500VCC/VDC) |
| Rigidez dielétrica / Withstanding voltage | 500 VCA / VAC (1 minuto / minute) |
| Temperatura de operação / Operating temperature range | -20°C a/to 85°C |
| Material do isolador / Insulator material | PBT UL94V-0 |
| Material do contato e carcaça / Contact and shell material | Latão / Brass |
| Acabamento carcaça / Shell finish | Niquelado / Nickel plated |
| Acabamento dos contatos / Terminal finish | Dourado / Gold flash |

Dimensões / Dimensions

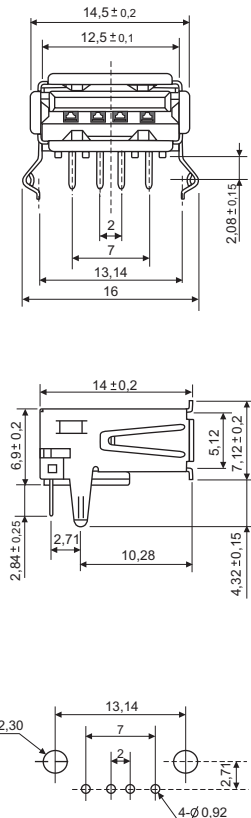
USB-BN



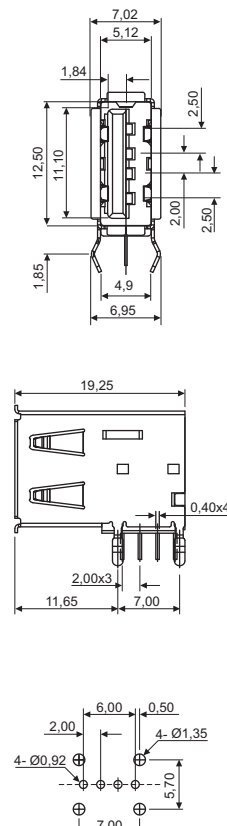
USB-ACS



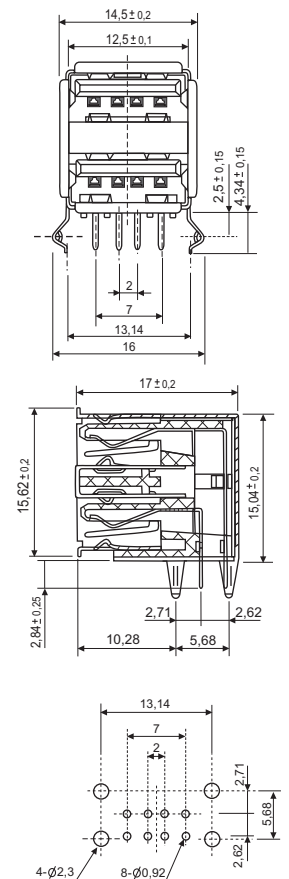
USB-ANS



USB-AVL



USB-AND



Tolerâncias não indicadas: ± 0,2mm / Not indicated tolerance: ± 0,2 mm
 Todas as dimensões em milímetros / All dimensions in millimeters